



Wellstead Primary School

Sowing the Seeds of Success



Early Years Foundation Stage

Welcome Pack

2026 - 2027



Respectful



Reflective



Aspirational



Adaptable



Collaborative



Independent



Welcome to Wellstead Primary School

On behalf of the staff and governors at Wellstead, I am delighted to welcome you to our wonderful school community.

Starting school is an important milestone for the whole family and we want to make that transition as smooth and possible. It is important to us that the children settle into their new school as quickly as they can and we can begin to get to know one another.

The most important part of the transition process is communication. We will begin the transition by talking to all of our feeder nurseries and pre-schools, gathering information about your child to help us to get to know them. Where we feel it is necessary, we will visit preschools so that we can see children playing in an environment familiar to them.

There are opportunities for you to come and meet us too! We have a new parents' induction evening, a new library session, home visits and stay and play sessions. If you feel that there is something that you'd like us to know about your child, please catch us at one of those events, let us know at the Home Visits, or feel free to email the school office on adminoffice@wellstead.hants.sch.uk and we will get back to you.

Our progressive Early Years Curriculum is focussed around our whole school vision of "sowing the seeds of success" and is based on knowledge of child development. Everything that we do is underpinned by our Learning Values; nurturing all of our children to be forward-thinking, reflective learners who have the skills to face challenges with self-confidence as they journey through Wellstead and onto their secondary education. Most importantly, we want our children to love school, love learning and make some super memories along the way!

This booklet provides you with all of the information that you need before your child starts with us. There is also a lot of information on our website www.wellsteadprimary.co.uk but if you have any questions, please do contact us through the school office.

Kind regards,

Mrs Amanda Greenwood

Headteacher



Getting to know each other: Key Dates

Thursday 4th June 5-6pm. Induction Evening

An evening for Parents and Carers only – please leave your children at home if you can. We will provide you with key information that you need to know about your child starting school. There will be an opportunity for you to have refreshments informally with other parents and school staff.

Wednesday 10th June 2.45pm - 3.15. 'Welcome to Wellstead Library'

A session for parents and children. An opportunity to visit the amazing Wellstead Library and borrow a book for the summer! A parent can bring their child to the session where they can visit the library and share a book with a member of the EYFS team. Due to the smaller space, please can we request that only one parent attends with their child.

Monday 22nd June / Thursday 2nd July 3.30 – 4.30pm. Stay and Play Taster Sessions

You and your child are invited to come and spend time in the Year R classrooms and garden with a variety of activities to choose from. Sign-up sheets will be available at the induction evening on 4th June.

Home Visits

Home visits from your child's class teacher and a Year R Learning Support Assistant (LSA) will happen throughout June and July. These are currently being organised by the Year R team. You will receive an appointment at the beginning of June.

Thursday 3rd September - Stay and Play Session 9.00 – 10.00 / 11.00 -12.00 / 2.00-3.00pm

Your child may be invited to an hour-long session to play in their Year R classroom and spend time getting to know the adults in the class. Children will be expected to attend this session without their parents. This session will be for invited children only. You will be given your time slot before the Summer holidays.

Friday 4th - Wednesday 9th September - Phased Entry into School

Friday 4th September - Children split into group A and group B (you will receive information on which group your child has been placed in before the Summer Holidays) Group A to attend 8.40 - 11.40am / Group B to attend 12.40 - 3.20pm.

Monday 7th September - All children to attend 8.40 - 11.40am

Tuesday 8th September - All children to attend 8.40 – 1.00pm. They will be having lunch at school.

Wednesday 9th September -All children to attend 8.40 – 1.00pm. They will be having lunch at school.

Thursday 10th September - All children attend full time from today (8.40am - 3.20pm)

Week Beginning 5th October - Parents Invited for Lunch

Parents will be invited to attend a lunch during this week with their child. Further information will be shared in September.

We look forward to meeting you on the 4th June, but in the meantime, if you have any questions then please do get in touch with us by sending an email to adminoffice@wellstead.hants.sch.uk

The school day

School begins at 8:50am and ends at 3:20pm. The children in Early Years are dropped off at their classroom (via the side gate at the front of the school) between 8:40am and 8:50am. They are collected from their classrooms at 3:20pm

There are two EYFS classes, Chickpea and Barley, and your child will be placed in one of those. We make that decision based on what we know about your child from talking to their nursery or preschool. The children spend a very short amount of time in their classes, with the majority of the time being free flow through the Year R area.

The two classes each have a class teacher and there is a team of Learning Support Assistants (LSAs) who work across the classes. There may be other Learning Support Assistants in the classrooms to support children with Special Educational Needs. We also have extra help from students during the year. We very much welcome volunteer parents or grandparents to help us, so if you are interested in being a part of your child's school day, please do let us know.

All children in Key Stage 1 and Early Years are entitled to a free fruit snack to eat during the morning as part of snack time. Parents can also choose to send an alternative snack but these need to be either fruit or vegetables. If your child is fussy with fruit or has a specific dietary requirement, please let us know. Please do not send your child into school with a non-fruit or vegetable snack.

Lunchtime will be 11:40am to 12:40pm and the children are entitled to a free hot lunch or cold alternative prepared and cooked on site by our catering team. Menus will be available on our website in the Summer Term.

We will invite you to come and have a hot dinner with your child once the children have settled and become familiar with lunchtimes in the hall. This is so that they can show you their new lunchtime routines and also so that you can experience a hot school dinner with your child. More information will follow.

Children are also very welcome to bring a packed lunch from home. Please make sure they can easily open any cartons / packets themselves and that you do not include any items that contain nuts – we have several children in school that are severely allergic.

All children who are under 5 are provided with a drink of milk which they have in the afternoon. This is free and as your child reaches 5, you have the option to pay for that should you want to continue.

School Uniform

At Wellstead, we hope that children will develop a sense of 'belonging' to our school community and wearing our school uniform is an important part of this.

All branded clothing can be ordered from Skoolkit via their website:

<https://www.skoolkit.co.uk/school-uniform/1270>

Skoolkit will be holding a 10% discount week in our Eastleigh store from Monday 20th – Saturday 25th July, where all items listed below will be subject to a 10% discount for this time only

Wellstead Primary School's winter uniform consists of:

- Grey trousers / grey skirt
- Sky blue or purple polo shirt – this can either be with the school logo or a plain generic item
- Purple embroidered school logo sweatshirt or cardigan
- Grey socks or tights
- Suitable black school shoes or black trainers

Wellstead Primary School's summer uniform consists of:

- Sky blue or purple polo shirt – this can either be with the school logo or a plain generic item
- Grey shorts / grey skirt
- Purple check summer dresses
- Suitable black school shoes

Wellstead Primary School's PE kit consists of:

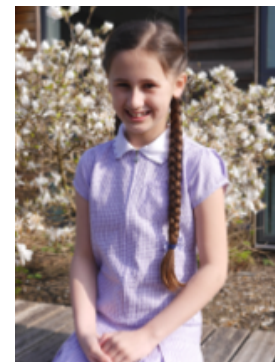
- Purple hoodie – this can either be with the school logo or a plain generic item
- House colour t-shirt – this can either be with the school logo or a plain generic item*
- Black PE shorts.
- Suitable sports trainers
- Black jogging bottoms or leggings for the winter.

Extra items required are:

- Purple book bag (generic item or with school logo accepted)
- Appropriate sunhats for hot weather
- Waterproof jacket and trousers to access outdoor play in all weathers
- A pair of wellies

*You will find out your child's house and colour at the Induction Evening on the 5th June

Please remember that all items must be clearly marked with your child's name.



We will have some items in school for size purposes from the 4th June, so please pop into the school office should you need any assistance. There will also be samples available on the Induction Evening in June.

Good quality second-hand uniform is also available at school and our parents' association, PoW sell second hand uniform, details of which can be found on the [PoW website page](#) or directly through this link '[Used Uniform](#)'.

For more information, please see the uniform page of our website:

<http://wellstead-primary-school.secure-primariesite.net/uniform-information/>

Parents of Wellstead (PoW)

PoW is a group of parents, teachers and other members of our school community that work together to plan and organise a range of events which build on the community of the school are fun and social events for all to take part in and raise money at the same time.

There are plenty of ways that you can become involved

1. Become a committee member: As a charity we hold an Annual General Meeting (AGM) where the committee members are voted in.
2. Become a member of our events team We understand that some parents do not have the time to become full committee members but still wish to be involved. We warmly welcome additional help in supporting the many events that we run throughout the year.

For further information, please email powchair@wellsteadapps.co.uk or see the PoW section of our website: <https://wellstead-primary-school.secure-primariesite.net/parents-of-wellstead-pow-1/>

Attendance

We are committed to providing an education of the highest quality for all our pupils and provide an environment where everyone feels valued and welcome. Parents and teachers share the responsibility for supporting and promoting excellent school attendance and punctuality for all.

For our children to take full advantage of the educational opportunities offered, it is vital they are at school, on time, every day the school is open unless the reason for the absence is unavoidable. The routines children develop around attendance and punctuality at school are the same as the expectations of any future employer in the world of work. High attainment, confidence with peers and staff and future aspirations depend on good attendance.

Please be aware that the school takes attendance very seriously and follows guidance from Hampshire and the DfE. Our attendance policy can be found on our website at <https://wellstead-primary-school.secure-primariesite.net/attendance/>

Please also be aware that the school will not authorise time off for a family holiday unless there are very specific and exceptional circumstances.

Learning at home and school

It is important to us that we work in partnership with you, we know that this makes learning and school life far more successful. Below are suggestions of how we support your child's learning at school and how you can continue this very easily at home.

Play

It can never be stressed too strongly that learning takes place when children are enjoying themselves and they will always do better when praised and encouraged. Play is your child's learning. What appears to be 'messaging about' in the sand and water is very important as through play they discover what can be done and what can be achieved with certain materials. Please allow space and opportunity for simple imaginative play through dressing up, painting, cutting and sticking, building with bricks, using playdough etc.

Talking together

Talk with your child at every opportunity. Whatever you are doing, try to talk about it; your child learns by listening and imitating. Even the most ordinary jobs have a value in introducing and reinforcing vocabulary. Saying rhymes, singing songs and telling stories can add greatly to children's vocabularies.

Reading

Story book reading is extremely valuable because it gives an opportunity for children to learn what joys can be obtained from reading books. Caring for books encourages children to become enthusiastic and we hope will help them to regard books as a source of pleasure. At school, we encourage children towards reading skills from the very beginning. We run a home/school reading scheme and even the youngest children are encouraged to take books home every day. Please support us with your child's reading by reading with them or to them and hearing them read at home.

Phonics Shed Scheme

The school follows the Phonics Shed Phonics programme, beginning in Early Years and continuing through until the end of Key Stage 1 and into Key Stage 2, where needed. The programme helps children learn the letter sounds needed for reading and writing. The sounds and corresponding letters are taught using picture prompts and cued articulation actions. Children will bring home a phonics book containing each sound as it is introduced and this will help you to learn in the same way as your child. You will also have the opportunity to attend a phonics workshop in the autumn term.

Writing

This is a difficult skill for young children to master. Please give your child as much opportunity as possible for practising gross motor skills, such as crawling and hanging from Monkey bars, as well as fine motor skills, such as threading beads onto string and scribbling, tracing patterns or joining dot-to-dot pictures. Let your child watch when you write and talk about what you are doing. If you write anything for your child or if they want to learn to write their own name, please use the lower case letters with only the initial letter as a capital. Show them how to use letters that make the

same sound as the word they are trying to make. It is always more important to help your child 'have a go' rather than worry about accuracy in these early stages.

Maths at home

Early mathematical experiences are very important. Much of our work involving maths is practical. The basis of mathematical learning is an understanding of words such as big/small, in front / behind, last / first, more / less than, near / far, heavier / lighter, tallest / shortest, over / under and the counting of numbers. Counting is the basis of all number work. Use any opportunity that arises to practise counting.

Being prepared

How parents can help:

In the run-up to school, there are numerous ways in which you can help prepare your child to be as independent as possible. Work with them to do as many of these activities as they can, by themselves:

- dress and undress
- put their shoes on the correct feet
- recognise their own name
- put on and take off a coat
- wash and dry their hands with soap
- blow their own nose and dispose of a tissue
- use a knife and fork
- put away toys and games
- follow simple instructions
- ask for help
- use the toilet independently

Please don't worry if they find some of these tricky, we will work together on them over the year.

The School Office

The school office is the hub of Wellstead! Our fantastic office team is always on hand to help with any enquiries that you might have. The best way to contact them is by email on adminoffice@wellstead.hants.sch.uk or by ringing the school number which is 01489 799351.

If your child is absent from school because they are unwell, please contact the school office as soon as possible. If you don't call us, we will call you because we have a legal duty to know where our children are during school hours and we want to be sure that they are safe. You must do this each subsequent day that they are off school. Any child who shows symptoms of sickness or diarrhoea should stay off school for 48 hours.

Any medication sent into school must be prescribed by a doctor and needs to be in its original packaging with the pharmacy label. A green form must be filled in with the school office.

<https://www.wellsteadprimary.co.uk/forms/>

If your child has a bump or accident in school, details will be logged on our online accident book 'Medical Tracker' this sends an automatic email message to let you know that your child has had first aid in school. If the accident is more than a minor bump or a scrape, we will phone you to let you know. We always take head bumps very seriously and if your child has a bump to the head, they will come home with a purple wristband as a reminder to keep an eye on them.

If your child has any specific medical needs, please contact the office who will work with you to complete an individual healthcare plan - this is important if your child requires emergency medication such as an epi-pen or asthma inhaler.

If your child has any specific dietary needs or allergies, please let us know as soon as possible.

You have completed the school registration forms. Information that you have provided will be stored on our Schools Information Management system - Arbor. You will have access to the Parent Arbor portal, please make sure that you keep your contact information up to date as we need this to be able to contact you in case of an emergency. This is especially important if the people authorised to pick up your child changes. All information is stored in accordance with the schools privacy notice which can be found on our website:

<https://www.wellsteadprimary.co.uk/gdpr/>

Thank you!

The office team

Wraparound Care

At Wellstead Primary School we offer both before and after school wraparound care. Our 'Wake-Up Wellstead' Breakfast Club runs Monday to Friday from 7:30am to the start of the school day and our 'Stay and Play' After School Provision runs Monday to Friday from the end of the school day until 6pm.

<u>Session Type</u>	<u>Time</u>	<u>Price</u>
<u>Breakfast Club (Short)</u>	<u>8:00–8:30</u>	<u>£2.25</u>
<u>Breakfast Club (Full)</u> <u>Includes food</u>	<u>7:30–8:30</u>	<u>£6.00</u>
<u>Breakfast Club Sibling (Full)</u> <u>Includes food</u>	<u>7:30–8:30</u>	<u>£5.70</u>
<u>After School Club (ASC)</u> <u>Includes food</u>	<u>End of school – 6:00pm</u>	<u>£13.50</u>
<u>After School Club Sibling (ASC)</u> <u>Includes food</u>	<u>End of school – 6:00pm</u>	<u>£12.83</u>

<u>After School Sports Club</u> <u>(Coach Ruben)</u>	<u>3:30–4:30</u>	<u>£5.50</u>
<u>Pitt Stop (New)</u>	<u>3:30–4:00pm</u>	<u>£2.25</u>
<u>After Party (New)</u> <u>Includes food</u>	<u>After another</u> <u>internal/external club –</u> <u>6:00pm</u>	<u>£8.10</u>

We encourage all families to check whether they are eligible for government support with childcare costs. You can find more information at:

<https://www.gov.uk/help-with-childcare-costs>

Term Dates and INSET Days

Term dates can be found on our website here:

<https://www.wellsteadprimary.co.uk/term-dates-and-inset-days/>

INSET Days for 2026-27 are:

1st September 2026

22nd and 23rd October 2026

27th November 2026

7th June 2027

New Year R section of the Website

We have set up a tab on our website where we will be uploading information, including this pack and the slides for the Induction Evening. There will also be a few leaflets and forms posted for you to have a look at as well - so please do have a look.

<https://www.wellsteadprimary.co.uk/starting-school-in-september-2026-new-cohort-infor/>