



Wellstead Primary School

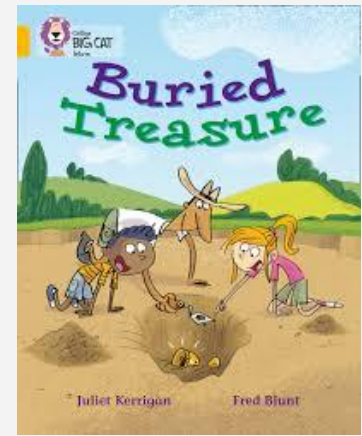
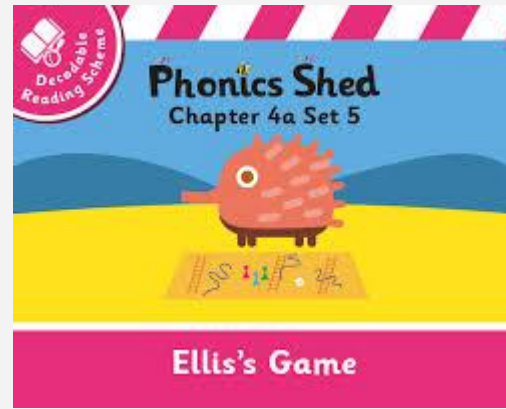
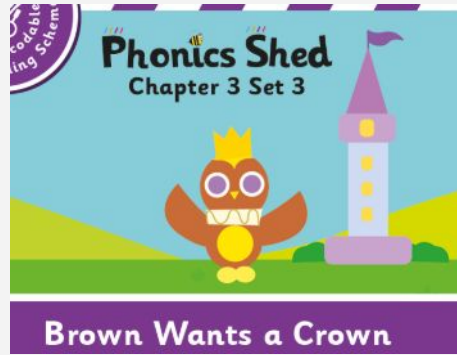
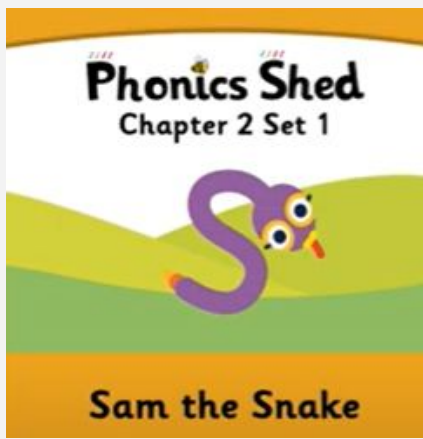
Sowing the Seeds of Success

Phonics at Wellstead

Phonics Shed is a scheme designed to support the teaching of early reading using phonics.

Joe is the main character and he owns the Phonics Shed garden, where we meet a variety of characters. Each character is a phoneme (sound) and there is a rhyme, song, action and story for each of them.





Children will learn a new sound every day in their daily phonics sessions. Their knowledge of letters and sounds will build quickly. Alongside this, they will learn how to blend the sounds to make words. As they learn the sounds, they will bring home a book containing words with the sounds they have learnt so far.

The book your child brings home will be decodable, meaning they will know all of the sounds within the story and are therefore able to sound out and blend each word in order to read the text.

They need to practise reading the book **at least 3 times** before we can change and move on.

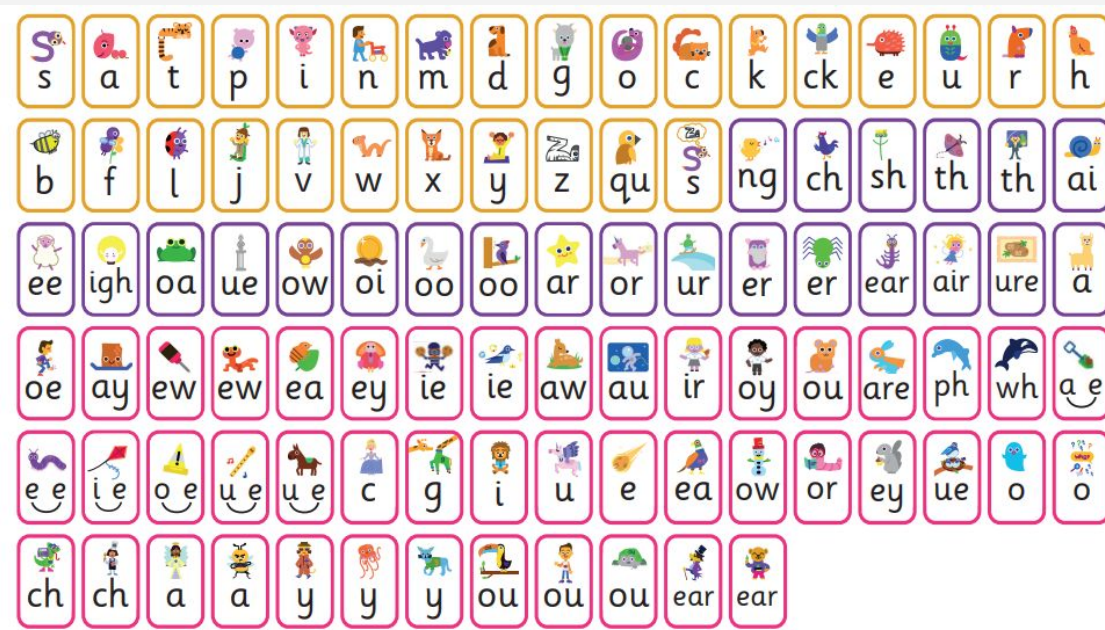
Reading session 1: There may be a lot of sounding out.

Reading session 2: Less sounding out and they will be able to confidently discuss the story

Reading session 3: The focus is fluency and reading smoothly.



**Please record
your child's
reading practise
in their liaison
book.**



Reception will complete chapter 2 and chapter 3 (chapter 1 is pre-school and does not focus on teaching to read words, more hearing sounds, rhyme and some traditional tales.)

Year 1 will complete chapter 4a and 4b and start 4c. Year 2 will recap and complete chapter 4c.

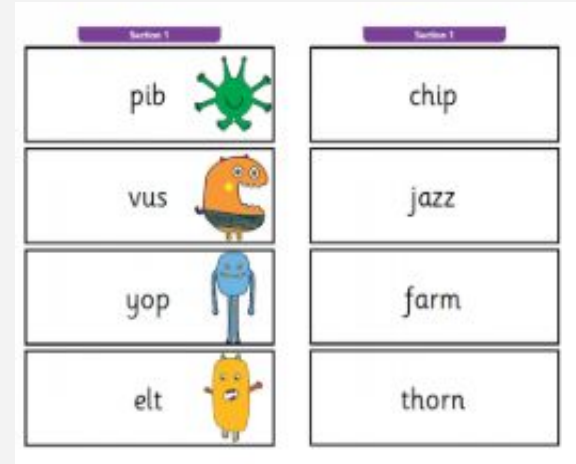
Phonics Screening Check

This is a national test that takes place in June in Year 1 to check the children are grasping their phonics.

The child do not know it is a test and will have plenty of practise beforehand.

They will complete the test 1:1 with their class teacher and families will be informed of the results at the end of the year with their school report.

The test is made of 40 words, some are alien words and some are real words.



The children will learn to read high frequency words, most are decodable but as they are common words, the more exposure to these mean their reading fluency will develop quicker.



then

Sound buttons help children to identify phonemes, digraphs, trigraphs which in turn helps them to blend.



she

Your child will have a keyword booklet, please practise these words at home.

sound it,

squash it,

say it,

c a t

cat

cat



Blending

Phonics Shed

say it,

stretch it,

sound it,

cat

cat

c a t



Segmenting

Phonics Shed

Decoding and
blending (to
read)

Encoding and
segmenting (to
spell/write)

Phonics...

Phoneme – The smallest unit of sound a letter makes.

Grapheme – The symbol (letter) used to represent a sound (phoneme)

Digraph – Two letters make one sound. *Ow ch ai*

Trigraph – Three letters make one sound *igh ear*

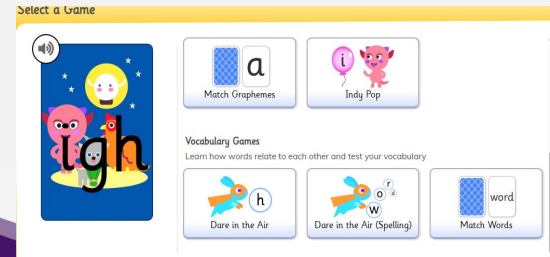
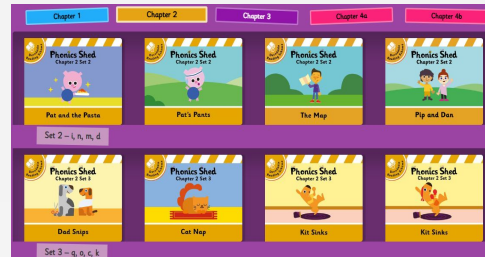
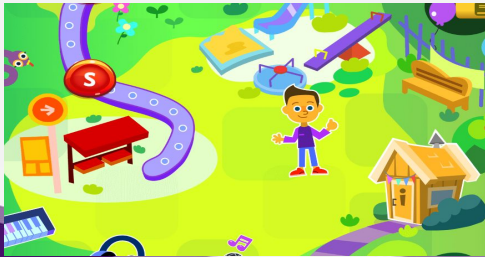
Tetragraph – four letters that make one sound *ough eigh*

Split Digraph – A digraph that has been split by another letter *cake*

Helping at home

Read daily at home, don't forget to sign your child's liaison book. Look at the sound mats with your child and ask them to tell you the sound.

Log on to Phonics Shed and play in Joe's Garden. (Your child's login is inside their liaison book)



Helping at home

Phonics Shed has a youtube channel which contains all the actions and songs: <https://www.youtube.com/channel/UC1AIG3iEN-hsVS1c5Z9SZZQ>

Each week phonics homework is uploaded to Google Drive. This will include the sounds learnt that week and words to read and practise.

As a school we have a subscription to Phonics Play, our login is: <https://www.phonicsplay.co.uk/>

Wellstead

Wellstead25



Year One weekly Home Learning

Number bonds to 10

Round up our learning

Answering questions about things from the past

Identifying the value of coins

Identifying ways to manage hurt

Designing a money picture

What is the value of celebrations?

Retelling a story

This week we are learning

Chapter 14 Set 1

Spin the mouse

Save the bee

Put the dolphin

Write the whale

ou round

are care

ph dolphin

wh which

Phonics Shed

New tricky words

house

Read the words containing this week's phonics sounds

© Kivela Lullies